









► Product Appearance



► Features

- | | |
|---|--|
|  <p>A grade brand new prismatic LiFePO cells</p> |  <p>Cell balance function</p> |
|  <p>> 6000 cycles / 8000 cycles @80% DOD(25°C, 0.5C)</p> |  <p>Metal Case, excellent heat dissipation, more safety</p> |
|  <p>Over charge, over discharge, over temperature, low temperature, over current and short circuit protection</p> |  <p>Certificate: UN38.3, MSDS IEC62619</p> |
|  <p>LCD display screen to monitor cell SOC, voltage, temperature and alarm status</p> |  <p>Max 4 battery packs can be connected in series/parallel
Max 2 battery packs in series/Max 4 battery packs in parallel</p> |

► Application



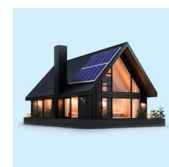
Marine power supply



Street Lighting



Camping



Household appliances power

► Technical Specifications

Model	LFP1.28KWH12.8V-P65L4	LFP2.56KWH25.6V-P65L3	LFP4KWH12.8V-P65L1DS
Electrical Parameter			
Battery Type	LiFePO ₄		
Nominal Voltage	12.8V	25.6V	12.8V
Nominal Capacity	100Ah	100Ah	314Ah
Energy	1280Wh	2560Wh	4019Wh
Pack Mode	4S1P	8S1P	4S1P
Continuous Discharge Current	50A	50A	100A
Charge Cut-off Voltage	14.4V	28.8V	14.4V
Discharge Cut-off Voltage	10.4V	20.8V	10.4V
Max.Charge Current	100A		
Max.Discharge Current	100A	100A	200A
Recommend Discharge Current	50A	50A	100A
Recommend Discharge Depth	80%		
Cycle Life	> 6000 cycles (25°C, 0.5C) 80% DOD	> 6000 cycles (25°C, 0.5C) 80% DOD	> 8000 cycles (25°C, 0.5C) 80% DOD
Function	---	---	Bluetooth
Communication	RS485		
Display	LCD		
Mounting	---		
Environmental Parameter			
Charge&Discharge Temperature	Charge: 0°C~+55°C / Discharge: -20°C~+60°C		
Optimal Storage Temperature	5°C ~ +35°C		
Relative Humidity	40%~80%		
Ingress Protection	IP65		
Mechanical Parameter			
Terminal	M6	M6	M8
Dimensions (L*W*H) (mm)	280*200*170	480*200*170	415*220*271
Weight (Kg)	13.3±0.5	23.8±0.5	33.4±0.1
Certificate	UN38.3 MSDS IEC62619		